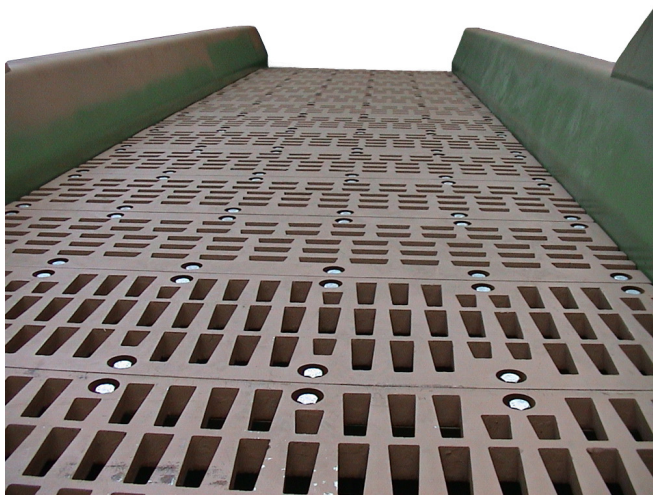


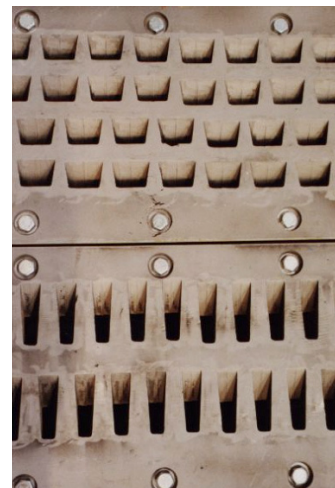
TWFE shakeout

The TWFE shakeout machines are equipped with an electronically adjustable angle of attack. Typically they are installed directly after a green sand mouldline. These proved machines are in a high quantity in practical operation in noted foundries. In general the TWFE machines are in use when sensitive cast parts needs to be unpacked. The sand lumps are treated on the screen surface by powerful vibrations. The angle of attack of the vibrations can be set by adjusting a potentiometer in the control cabinet. The range is between 50° and 80°.



Properties:

- + Adjustable vibrating angle via potentiometer
- + Long lifetime of the manganese steel screen sections
- + Few risk of screen plugging by trapezoidal declined apertures
- + Standard S7 components in the control cab
- + No angle encoder or incremental encoder connected to the motor shaft
- + Driven via standard three-phase motors.
- + Excited via four discreet built exciter cells with an own oil sump
- + Exciter units are completely demountable; changing bearings or seal rings is a „bench job“



Manganese steel - grid sectiones